

11 Mrd. €

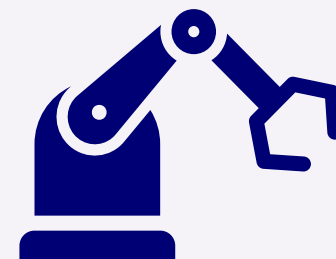


13.500.000 €
/Monat

Warum?



Sehr gut im Bauen von Maschinen



***Nicht so gut im Verpacken und Versenden von
Ersatzteilen***





3

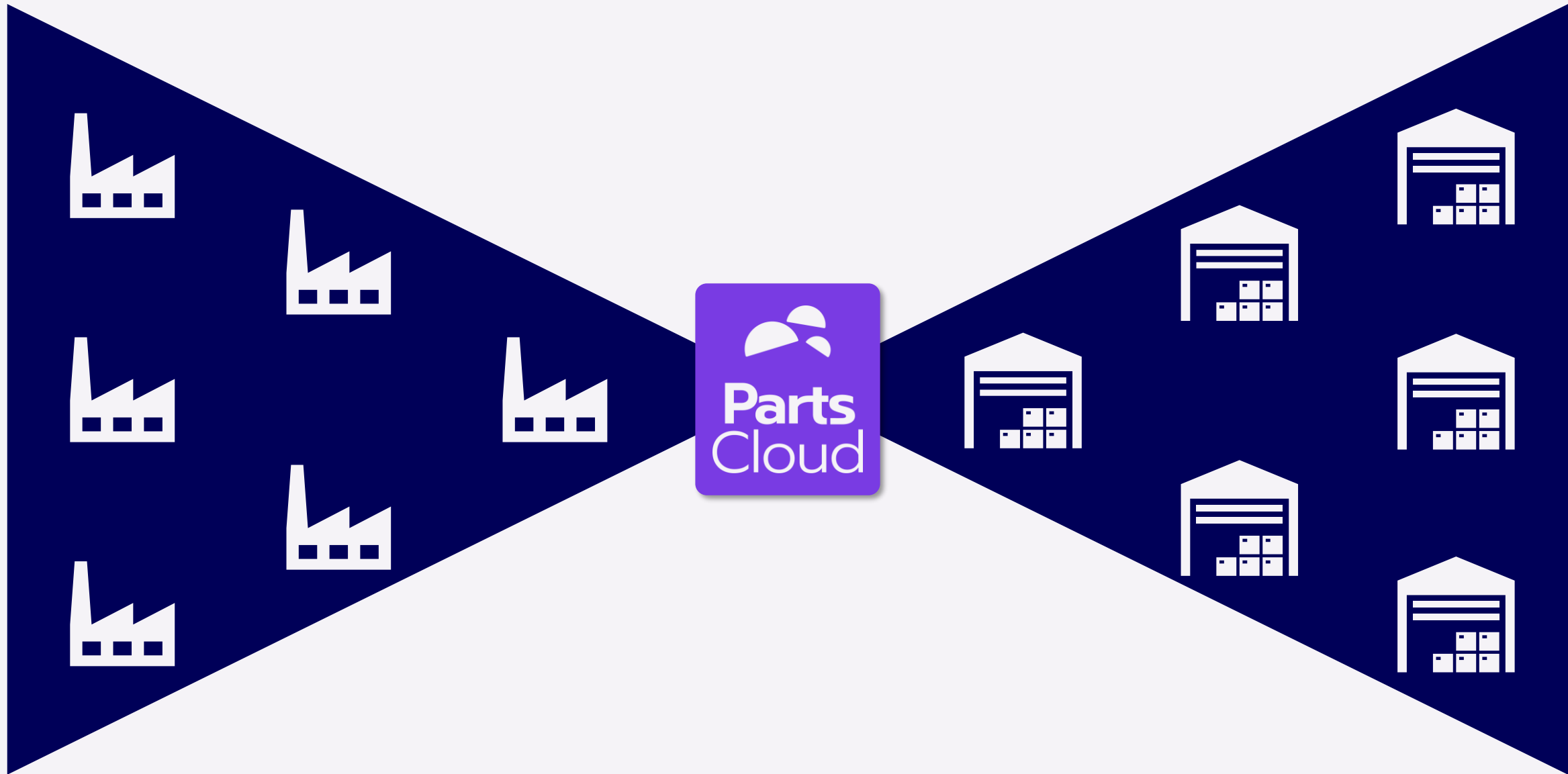
**Kunden
live**

10

**Logistik-
Partner**

100Tsd.

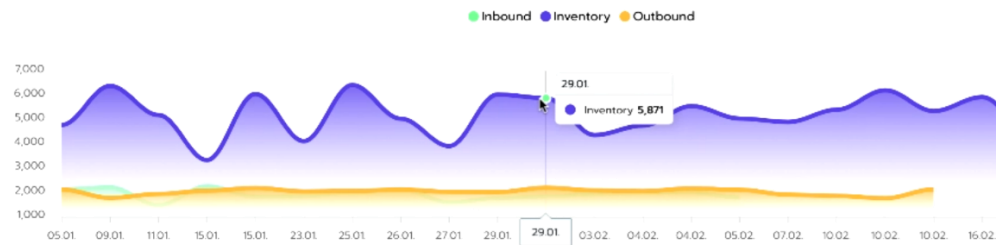
**Sendungen
weltweit**



Overview

Jan 01, 2021 - Feb 20, 2021

Monthly Flow

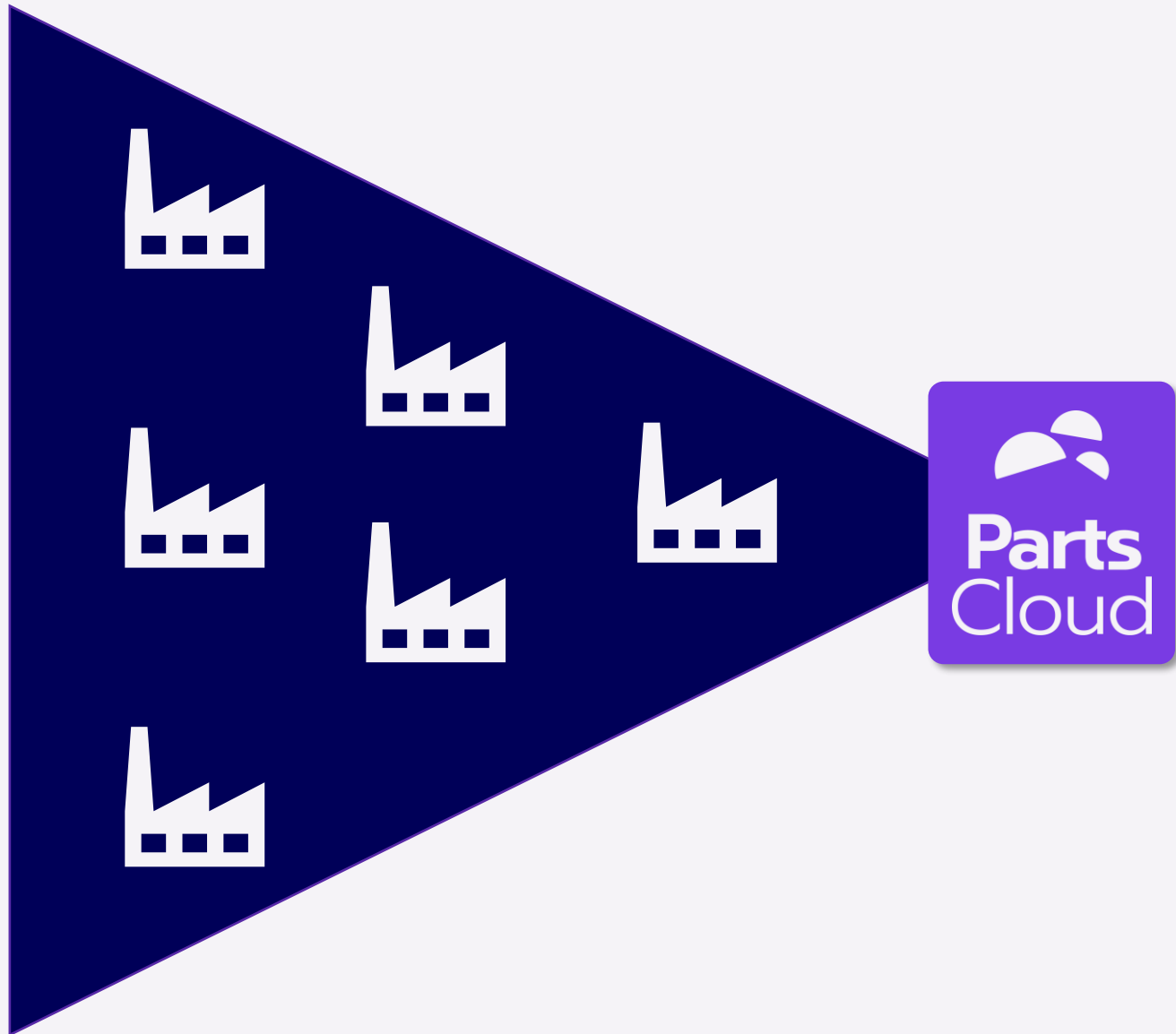


Current Statistics

Inbound		Inventory		Outbound	
No. of Inbounds	28.611	No. of SKUs	119.034	No. of Outbounds	38.295
No. of Inbound-Positions	28.940	Stock Turnover	232,5 p. a.	No. of Outbound-Positions	38.507

+40%
Profit





11 Mrd. €
Umsatz

Bis zu
90%
reduzierte
Emissionen!





Besucht uns!

