

Challenges in Warehousing - and how the Use of new Technologies will help you !

Alexander Honigmann
Sales Director Retail & Logistics
Germany

Daniel Dombach
Director Industry Solutions T&L



Zebra Technologies

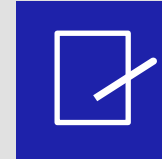
Scalable to meet any enterprise demands



\$5.6 billion
global sales



128
offices
across 55 countries



~5,300
patents
US and INTL patents issued
and pending



9,800
employees
worldwide



10,000+
channel partners
in over 180 countries



~10% of sales
R&D*
* \$567 million

Portfolio

Tablets/Kiosks



- Self-service
- Click & Collect
- Drive Thru
- Mobility DNA

Printers



- Mobile
- Card
- Desktop
- Industrial
- RFID

RFID



- Wand
- Stationary
- Bluetooth
- Ultrawide Band

Mobile Computers



- T&L
- Retail
- Manufacturing
- Healthcare
- Wearables
- Vehicle Mounts

Scanners



- Multi-Plane
- Handheld
- Mobile Computing
- Digital Image
- Ultra Rugged

Intelligent Edge



- Prescriptive Analytics
- SmartSight
- SmartPack
- Motionworks
- WorkforceConnect
- SmartLens



OneCare-Supportservices

Signature Services

VisibilityIQ

VisibilityIQ OneCare



#1

MOBILE COMPUTING

#1

RFID READERS

#1

SCANNING

#1

DESKTOP PRINTING

#1

TABLETOP PRINTING

#1

MOBILE PRINTING

50+ Years of Innovation



Founded as Data Specialties by Ed Kaplan and Gary Cless



First thermal printer for on-demand barcode labeling



First rugged RFID handheld and first enterprise digital assistant (EDA)



First rugged enterprise digital assistant



First smart environment for thermal printers



First all-touch Android™ inventory solution



First Android-based enterprise wearable computer



Acquisition



Acquisition



Acquisition



Acquisition



Acquisition

1969 1982 1986 1991 1997 2004 2008 2013 2015 2016 2017 2018 2019 2020 2021



First handheld laser barcode scanner



First laser-scannable 2D barcode



First barcode printer



First wearable computer



First mobile RFID printing solutions



First IoT platform for enterprise applications



Motorola Solutions' Enterprise Business acquisition



Only migration path to modern OS for legacy Windows™ applications



Collaboration with NFL and Wilson Sporting Goods to track game footballs



First data intelligence platform



Acquisition



Acquisition

fetch robotics

Game-Changing Disruption

Demand is increasing steadily with no end in sight

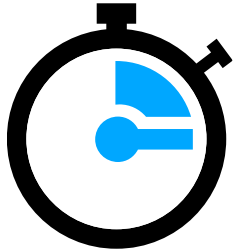


Need for greater agility and flexibility

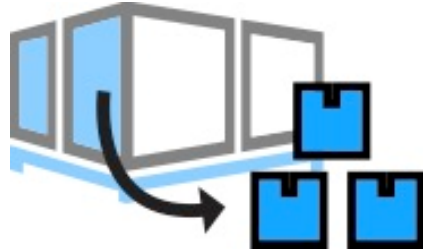
A single production line can generate more than 70 terabytes of big data per day—yet most data remain unanalyzed

The supply chain is experiencing disruption

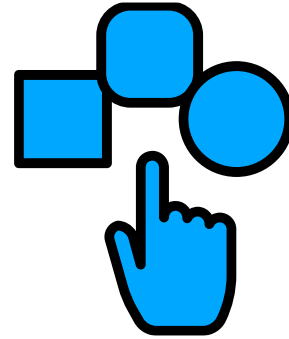
Consumer expectations are forcing change



Velocity



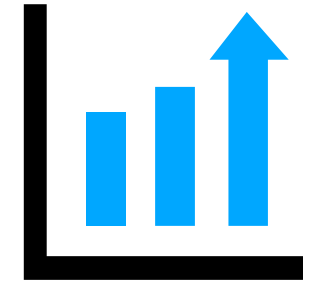
Volume



Variety



Visibility



Value



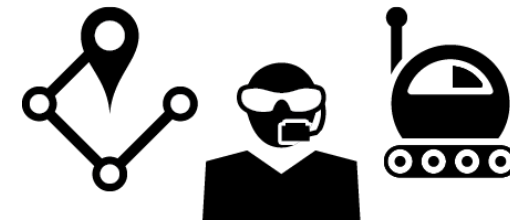
Drivers

46% cited faster delivery to end-customers as the primary factor driving their growth plans



Challenges

60% reported labour recruitment and/or labour efficiency and productivity among their top challenges

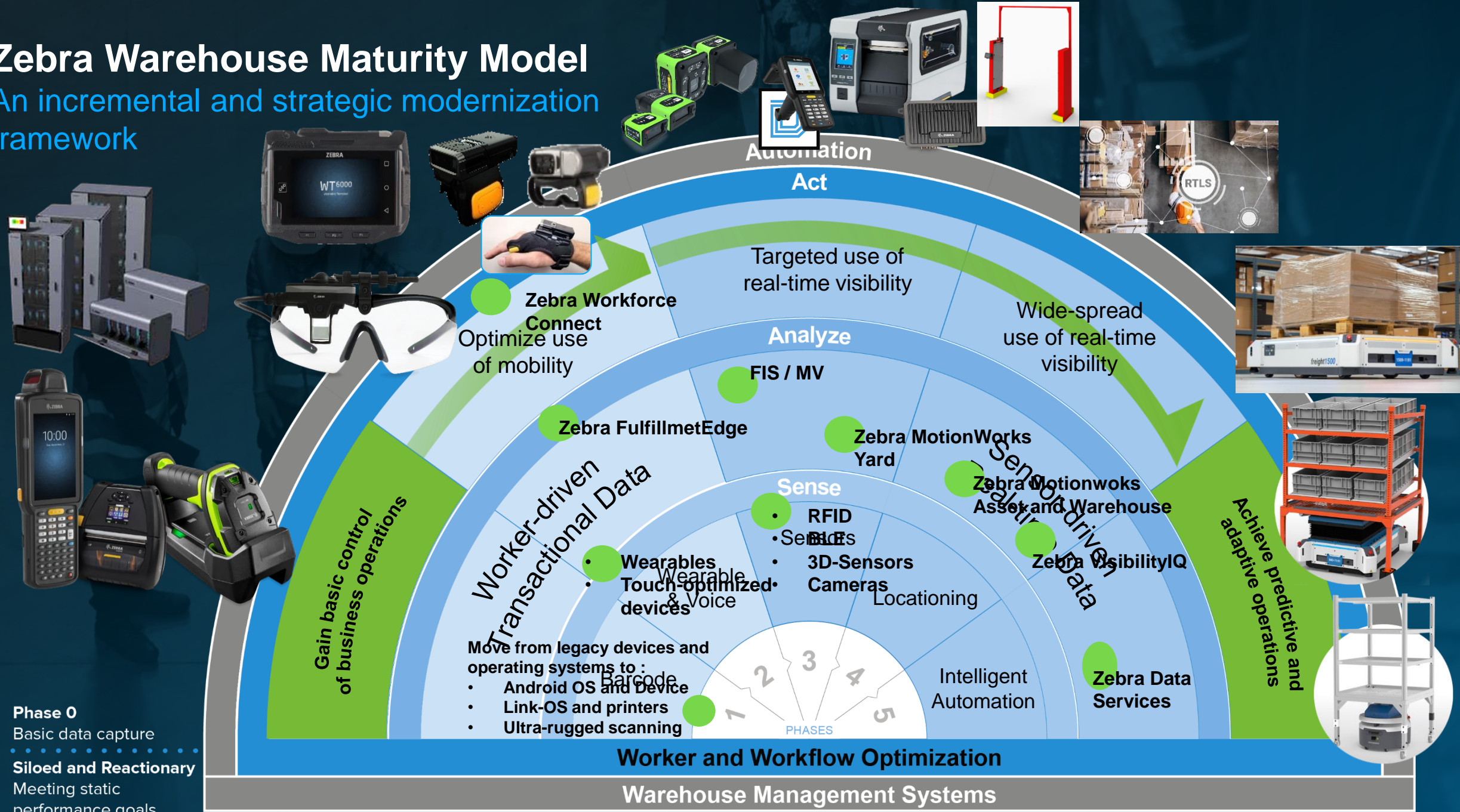


Strategies

80% of organisations are planning to invest in new technologies to be competitive

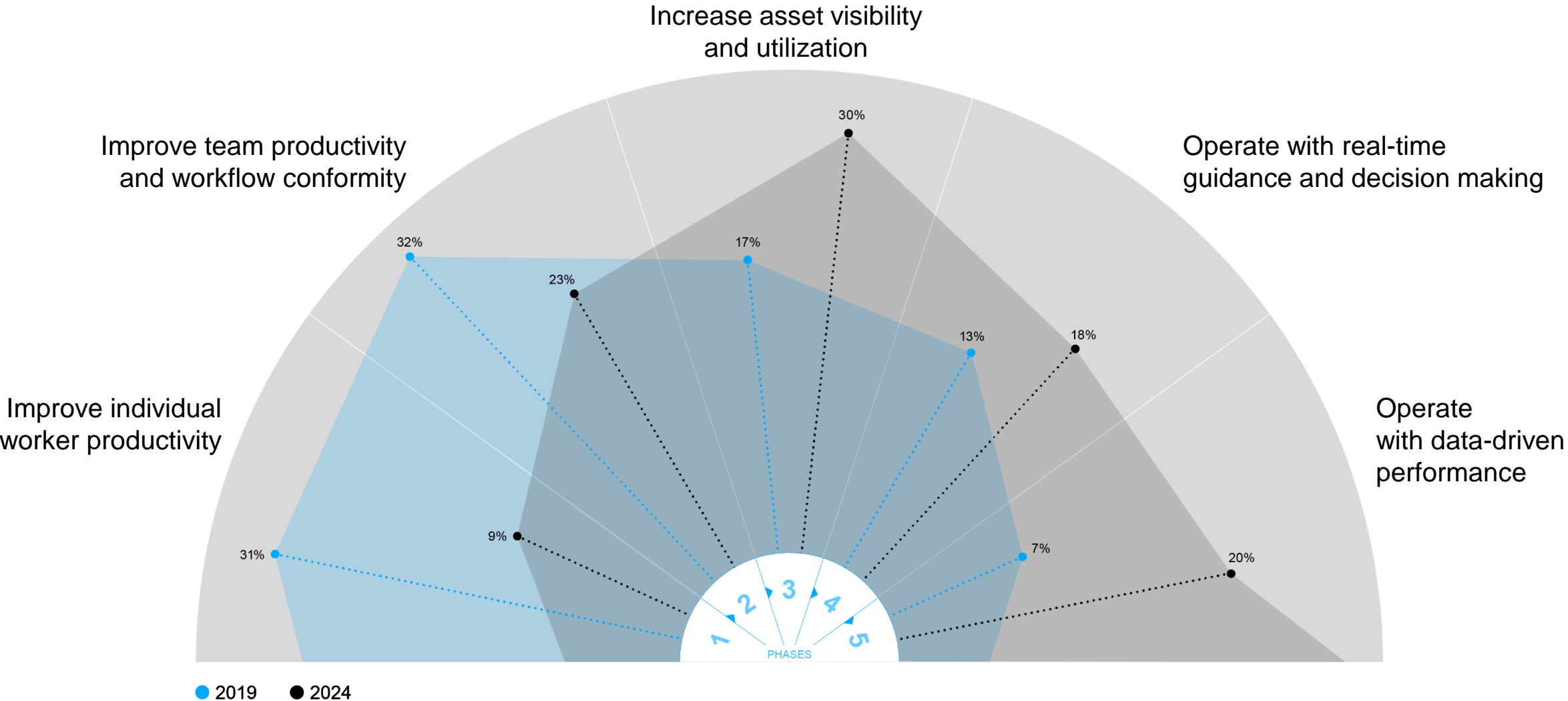
Zebra Warehouse Maturity Model

An incremental and strategic modernization framework



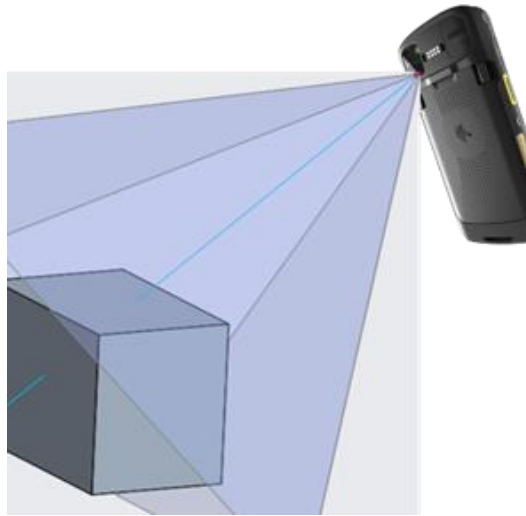
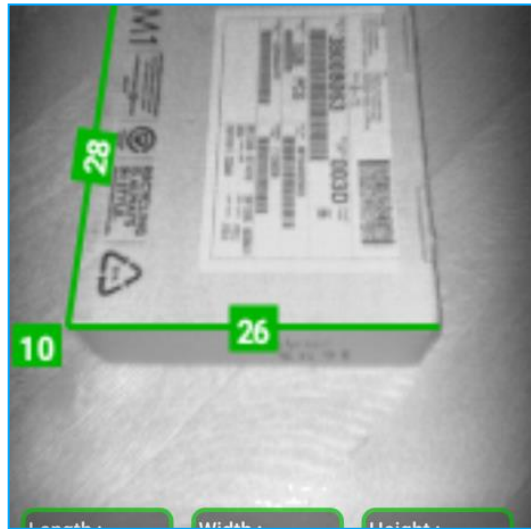
The Time to Modernize is Now

Majority of respondents agree worker and team productivity is a priority

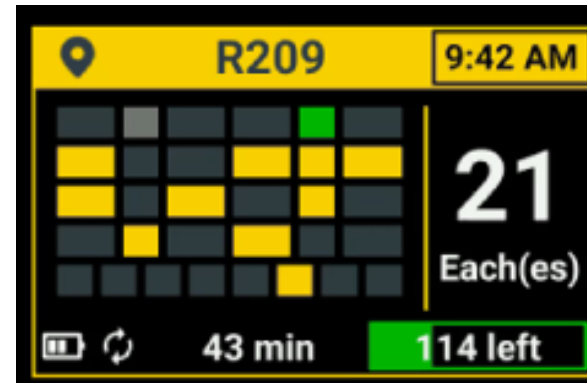


Zebra - Certified Mobile Parcel Dimensioning


Legal For Trade can be used as basis for customer pricing.




Phase 2: Intuitive Software & Augmented Reality





Conveyor 6 left 

 **Item**

Phase 3: real-time Visibility by eliminating manual scanning

... Latest hardware are ready for tomorrow's AI enhancements



**Overhead/
Hands-free Scanning**



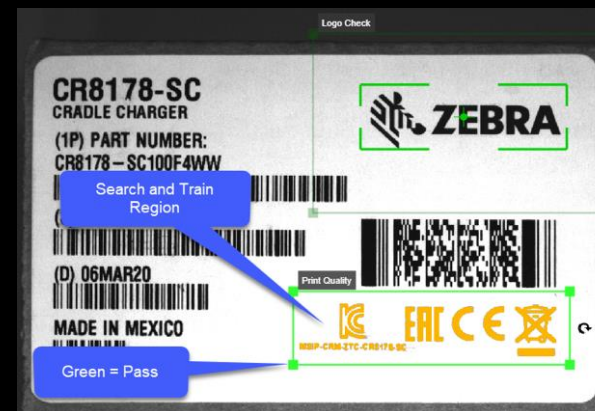
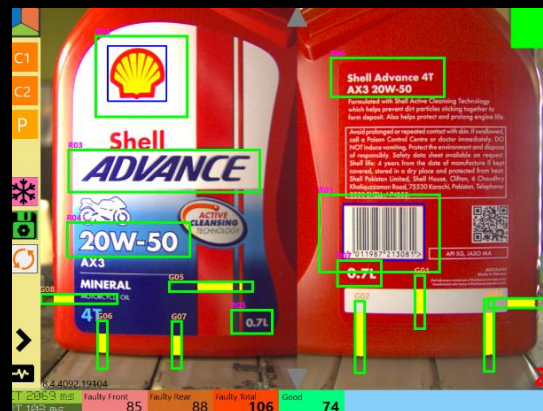
**Inline/Automated
Scanning**



Print and Apply
(Fixed Industrial Scanning and
Fixed Industrial Scanning PLUS)



Assembly Verification
(Presence/Absence Detection)



Phase 4: Robotics



ZEBRA TECHNOLOGIES & FETCH ROBOTICS CONFIDENTIAL

Thank you



ZEBRA and the stylized Zebra head are trademarks of Zebra Technologies Corp., registered in many jurisdictions worldwide. All other trademarks are the property of their respective owners. ©2019 Zebra Technologies Corp. and/or its affiliates. All rights reserved.